

OPERATOR:	Trio Petroleum Inc.		
ORIGINAL OPERATOR:	N/A		
LEASE:	Surf-USL		
WELL No.:	1		
LOCATION:	T30S-R21E, S9		
COUNTY:	Kern		
FIELD:	Belgian Anticline		
TD:	1840	Formation at TD:	
KB:	1823		N/A

0	Gamma Ray (API Units)	150	300	Neutron (API Units)	1000
-100	SP	50	0	Resistivity (SN)	100/1000
0			0	Resistivity (LD)	100/1000
			60%	NPOR	0%
			1.65	RHOB	2.65

# WELL LOG DIGITIZING

**CALL DAVIS & NAMSON**

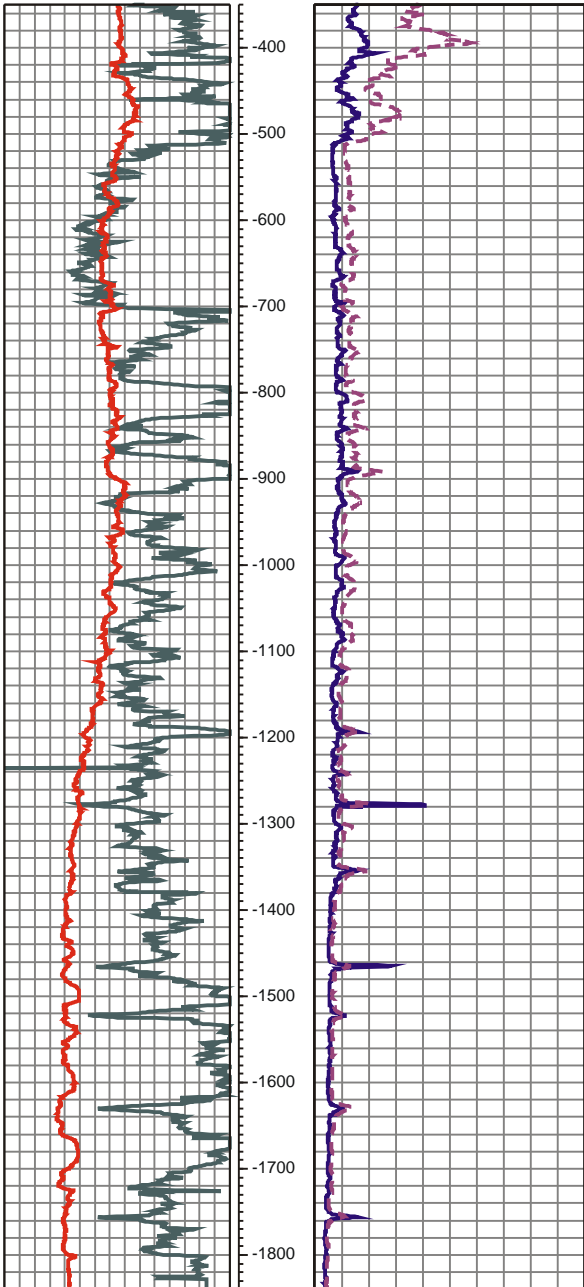
**818-248-2141**

**OR DAVNAMTHOM @AOL.COM**

**3916 FOOTHILL BLVD., SUITE B**

**LA CRESCENTA, CA 91214**

**[www.davisnamson.com](http://www.davisnamson.com)**



Convert Oil and Gas Well Logs  
to Digital Files

High Quality Geological Staff

Rapid Turn-Around  
24hrs (<10 Logs)

Neuralog Scan System for  
High Precision

\$0.58-\$0.75/100ft for  
Normal - Difficult Logs

Formats Include LAS, DXF, WMF,  
TIF, JPG etc.

All Header Information Included

OPERATOR	Trio Petroleum Inc.
LEASE	Surf-USL
WELL No.	1